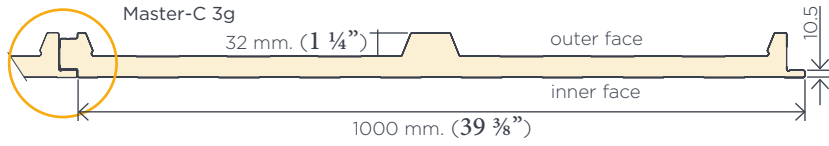
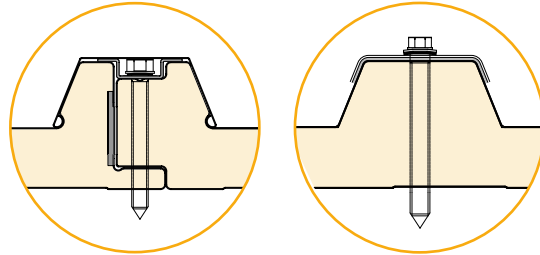


# Construction details:

## Master-C type profiles and joints:

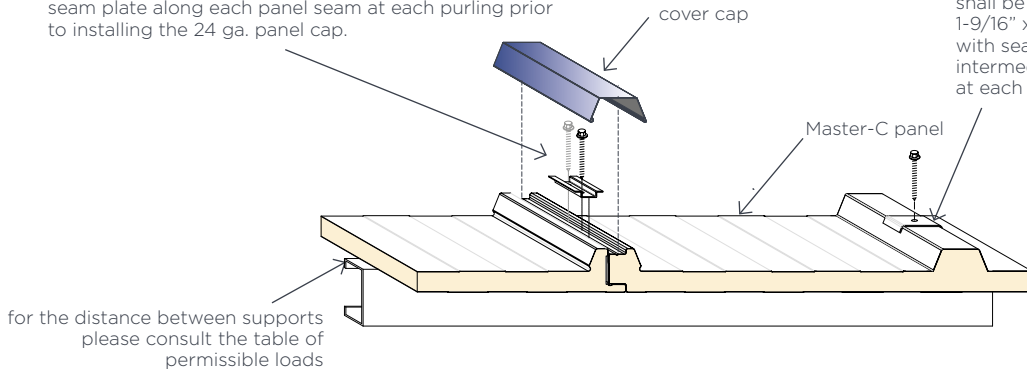


fixing details:



#12-24 HWH fastener with 1/2" bonded sealing washers shall be installed through a 2-3/8" x 1-9/16" x 16 ga. seam plate along each panel seam at each purling prior to installing the 24 ga. panel cap.

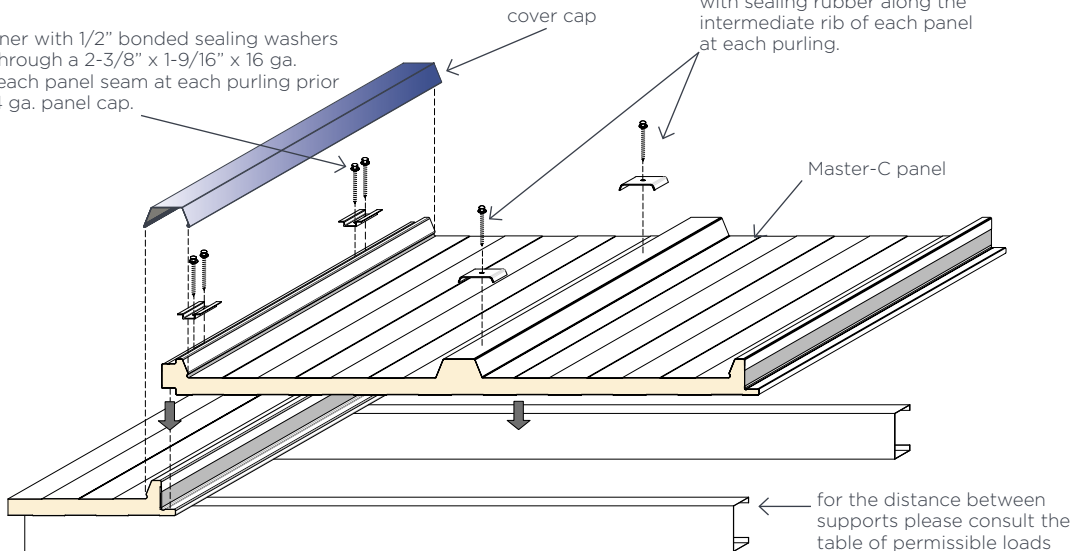
#12-24 HWH fastener with 1/2" bonded sealing washers shall be installed through a 1-9/16" x 20 ga. bearing plate with sealing rubber along the intermediate rib of each panel at each purling.



### EXPLODED VIEW OF A MASTER-C JOINT:

#12-24 HWH fastener with 1/2" bonded sealing washers shall be installed through a 2-3/8" x 1-9/16" x 16 ga. seam plate along each panel seam at each purling prior to installing the 24 ga. panel cap.

#12-24 HWH fastener with 1/2" bonded sealing washers shall be installed through a 1-9/16" x 20 ga. bearing plate with sealing rubber along the intermediate rib of each panel at each purling.

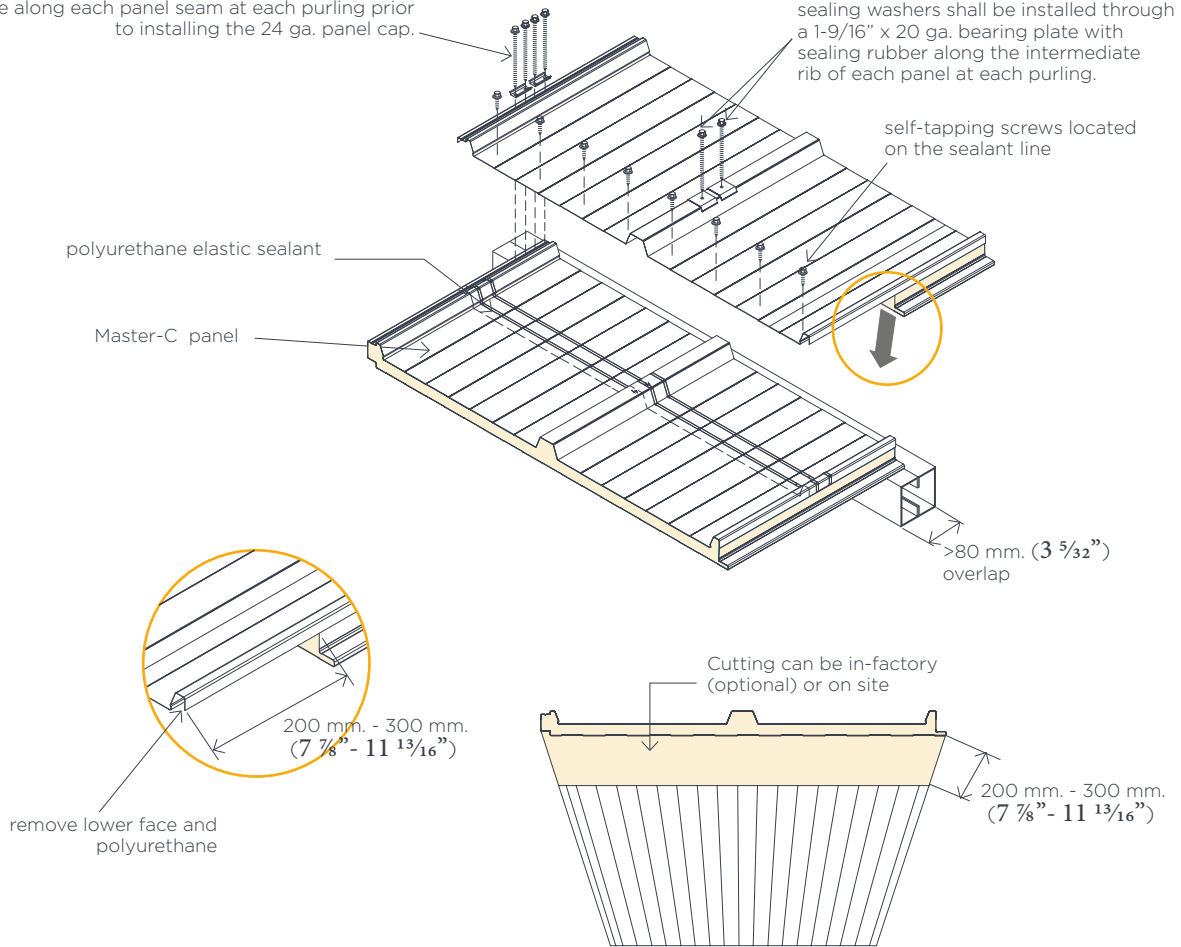


# Sheet overlaps:

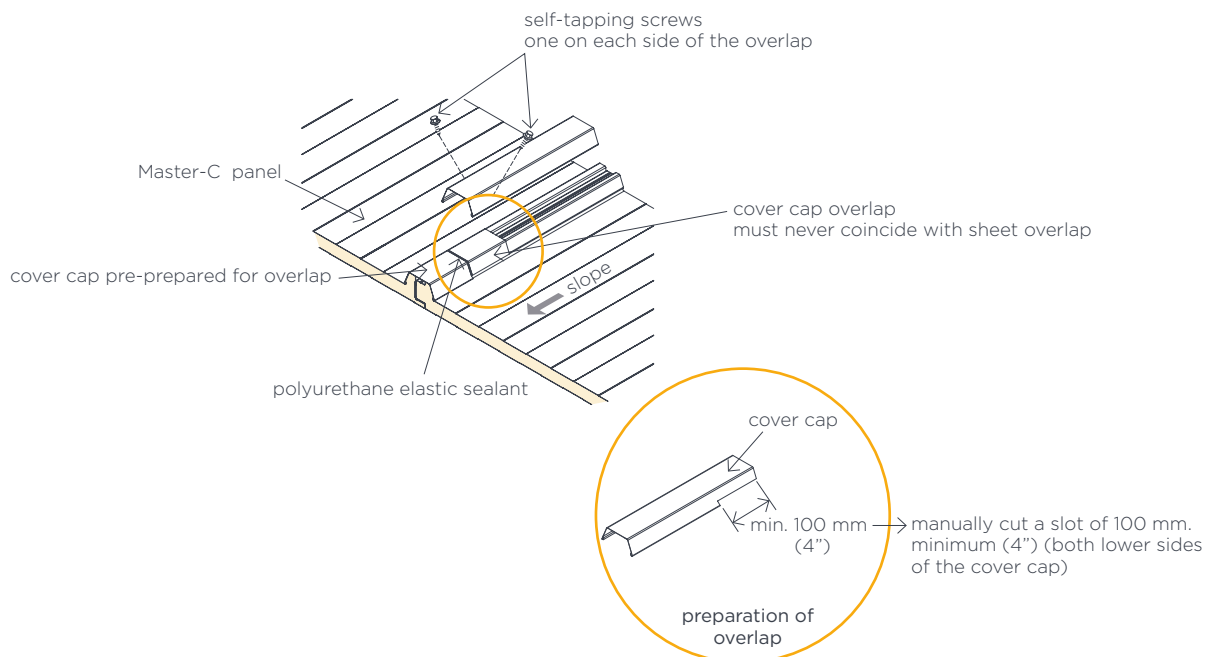
#12-24 HWH fastener with 1/2" bonded sealing washers shall be installed through a 2-3/8" x 1-9/16" x 16 ga. seam plate along each panel seam at each purling prior to installing the 24 ga. panel cap.

a solution to be used when the length of roofing is greater than the maximum transportable: national = 16.00m and export = 39'

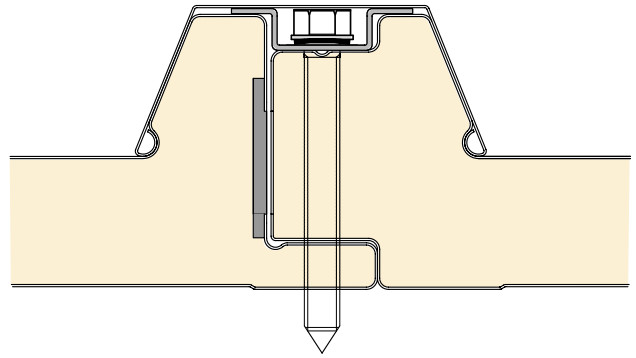
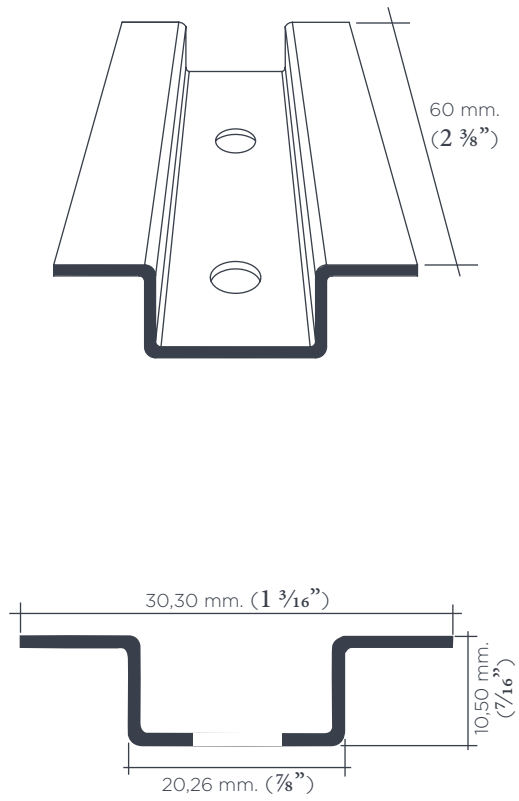
#12-24 HWH fastener with 1/2" bonded sealing washers shall be installed through a 1-9/16" x 20 ga. bearing plate with sealing rubber along the intermediate rib of each panel at each purling.



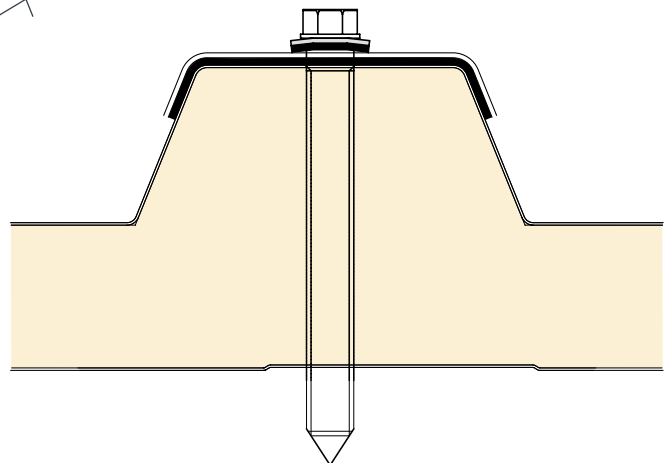
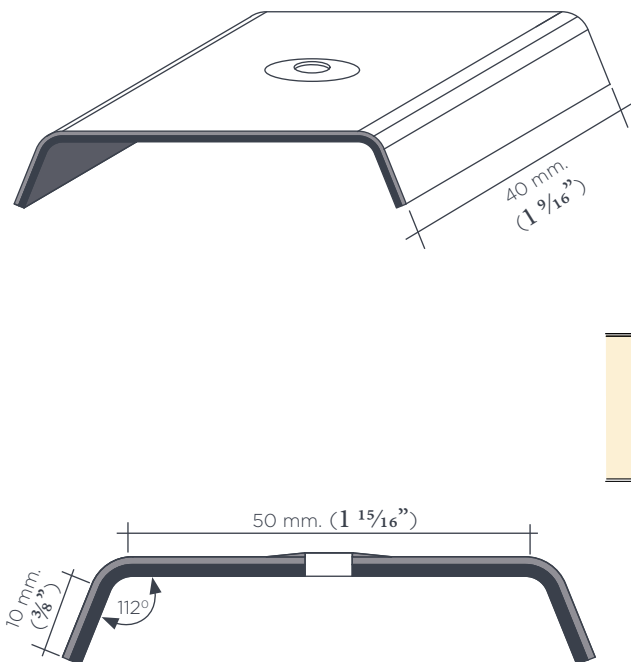
# Cover cap overlaps:



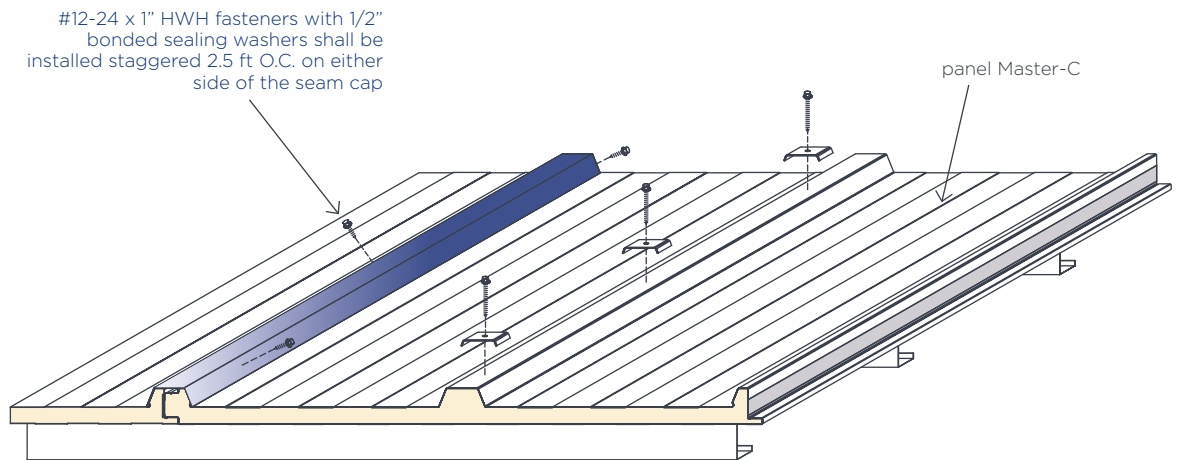
## Seam plate:



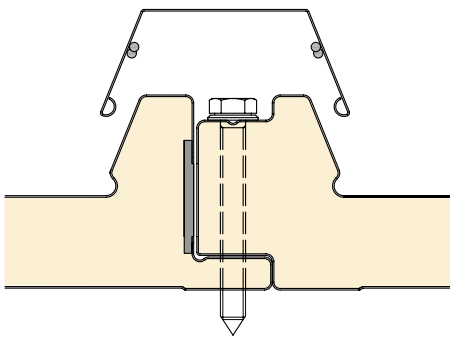
## Bearing plate:



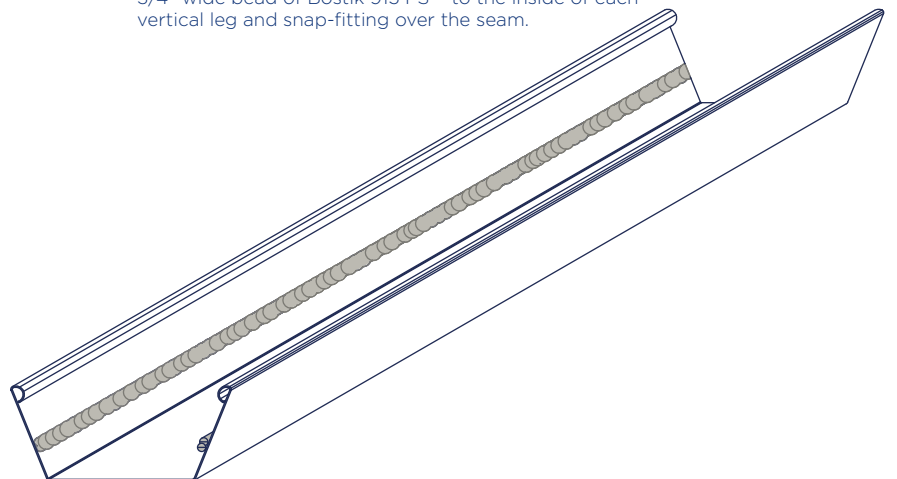
## Cover cap fixing details:



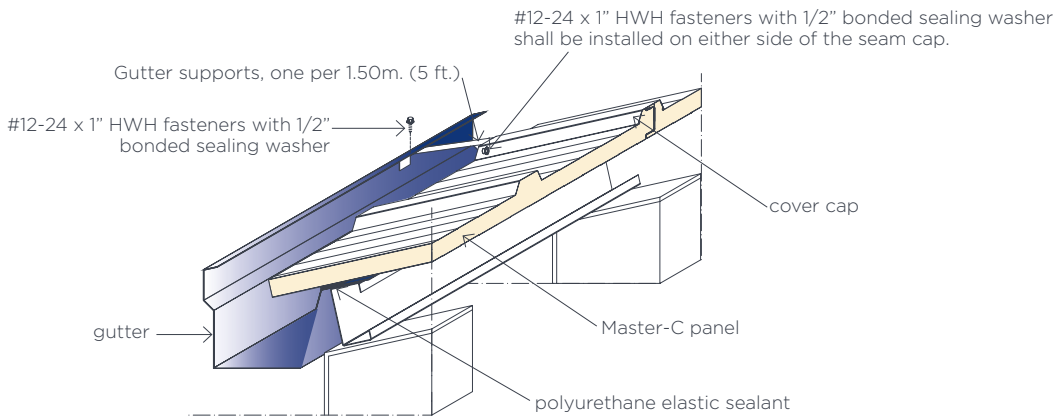
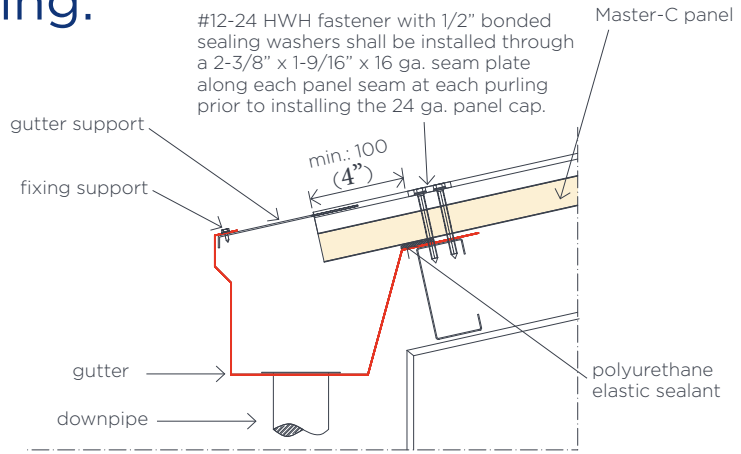
## ASTM E 2140 test Method for water penetration



two (2) # 12- 24 x 4-1/4" HWH fasteners with 1/2" bonded sealing washer were installed through a 2-3/8" x 1-9/16" x 16 ga. bearing plate along each panel seam at each purlin prior to installing the 24 ga. steel cap. The cap was installed by applying a continuous 3/4" wide bead of Bostik 915 FS™ to the inside of each vertical leg and snap-fitting over the seam.

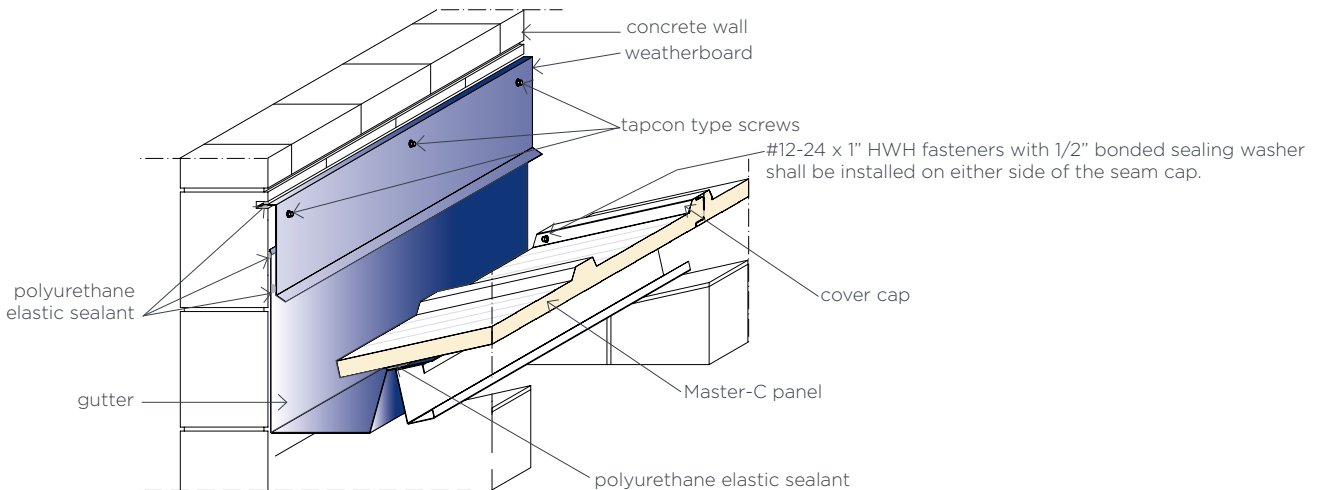
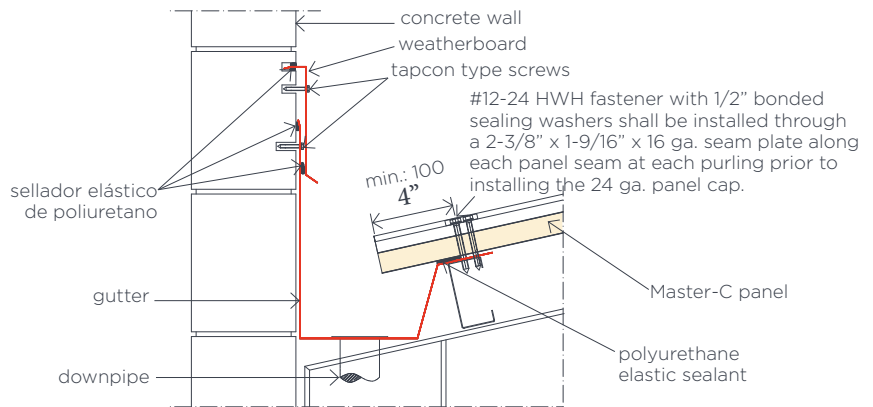


# Exterior Guttering:

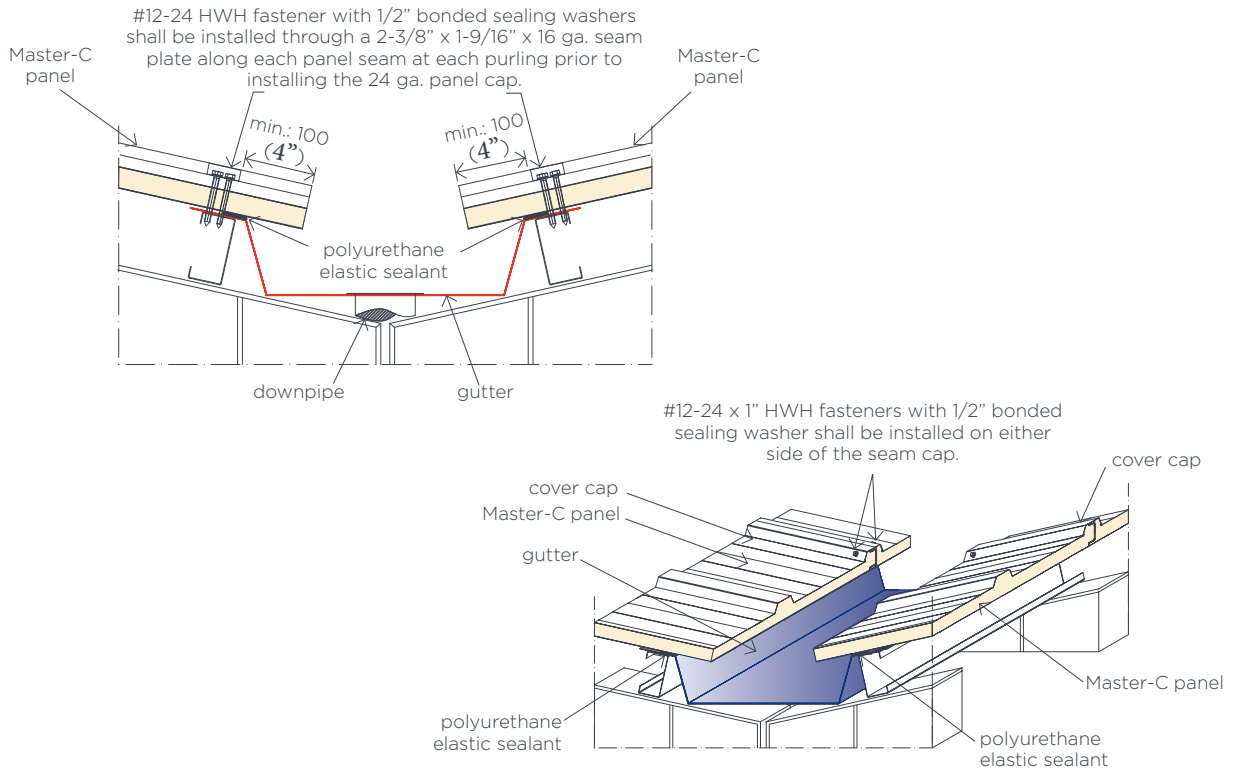


# Interior guttering on concrete wall:

Detail not recommended in geographical areas where the maximum intensity of rain > 20 cm. (10")/ hour

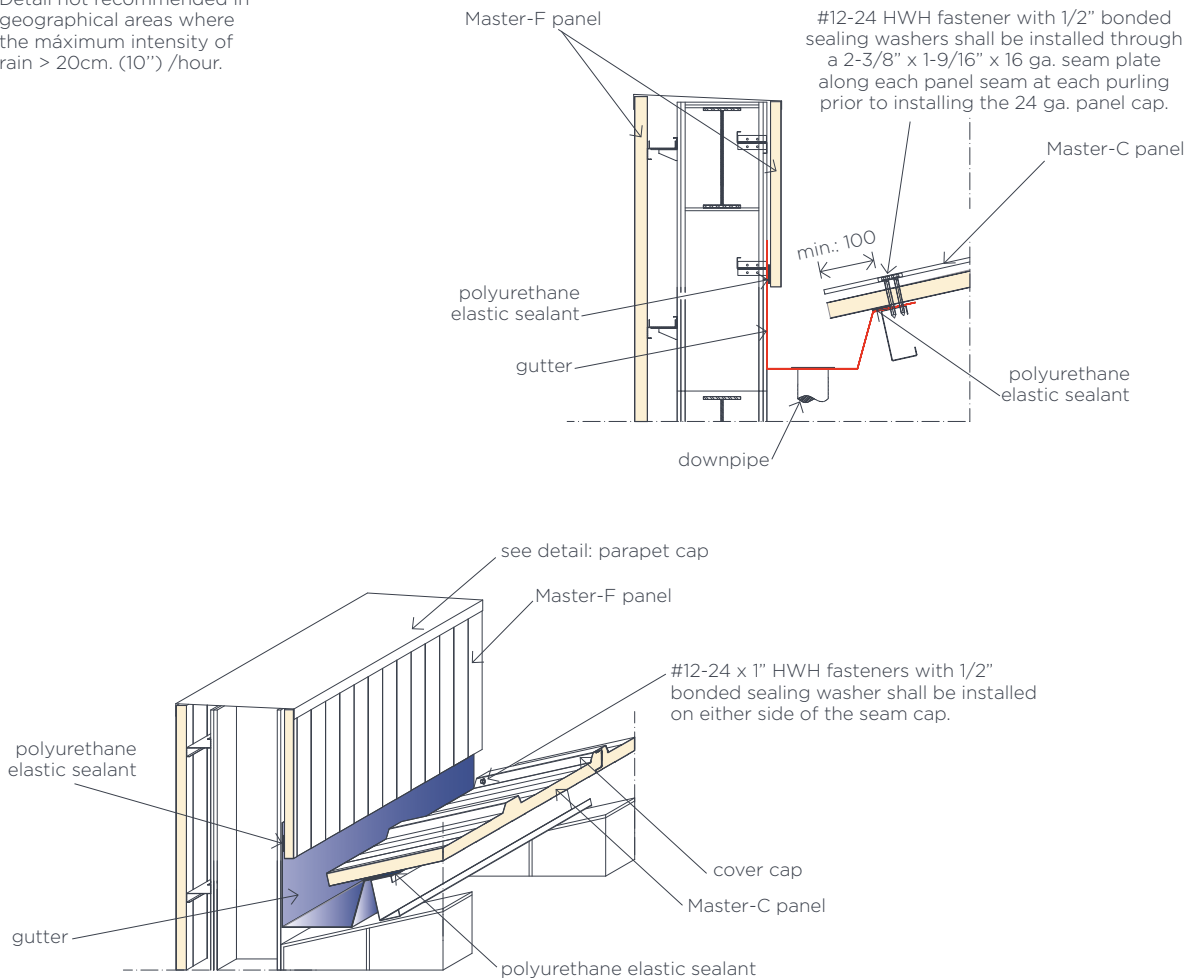


# Central guttering:



# Side interior guttering:

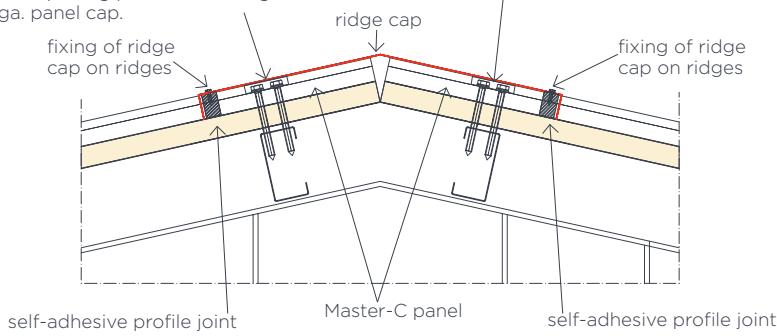
Detail not recommended in geographical areas where the maximum intensity of rain > 20cm. (10") /hour.



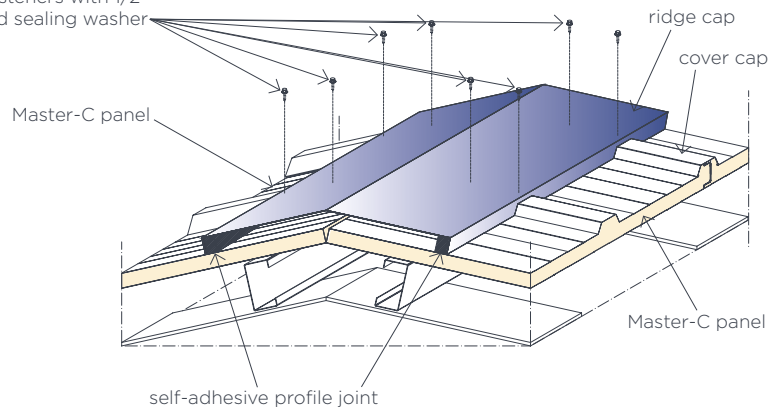
# Ridge caps:

#12-24 HWH fastener with 1/2" bonded sealing washers shall be installed through a 2-3/8" x 1-9/16" x 16 ga. seam plate along each panel seam at each purling prior to installing the 24 ga. panel cap.

#12-24 HWH fastener with 1/2" bonded sealing washers shall be installed through a 2-3/8" x 1-9/16" x 16 ga. seam plate along each panel seam at each purling prior to installing the 24 ga. panel cap.

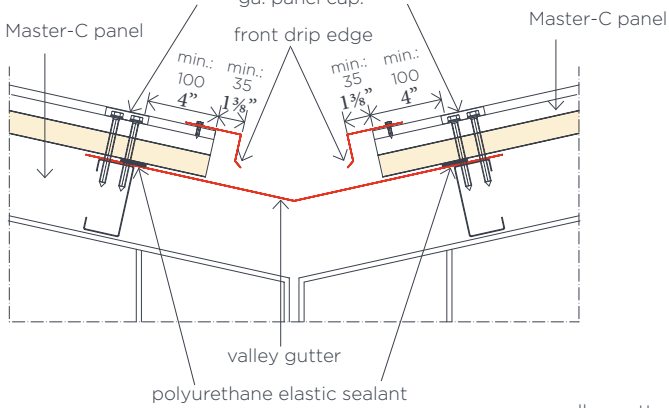


#12-24 x 1" HWH fasteners with 1/2" bonded sealing washer

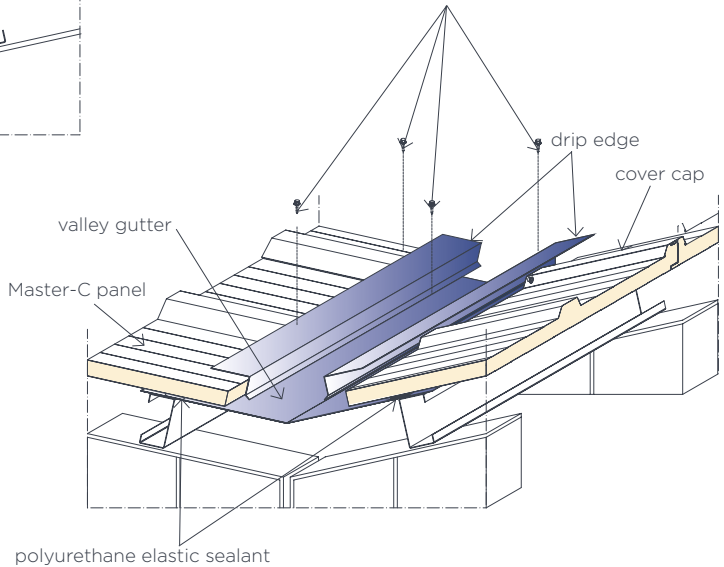


# Valley gutters:

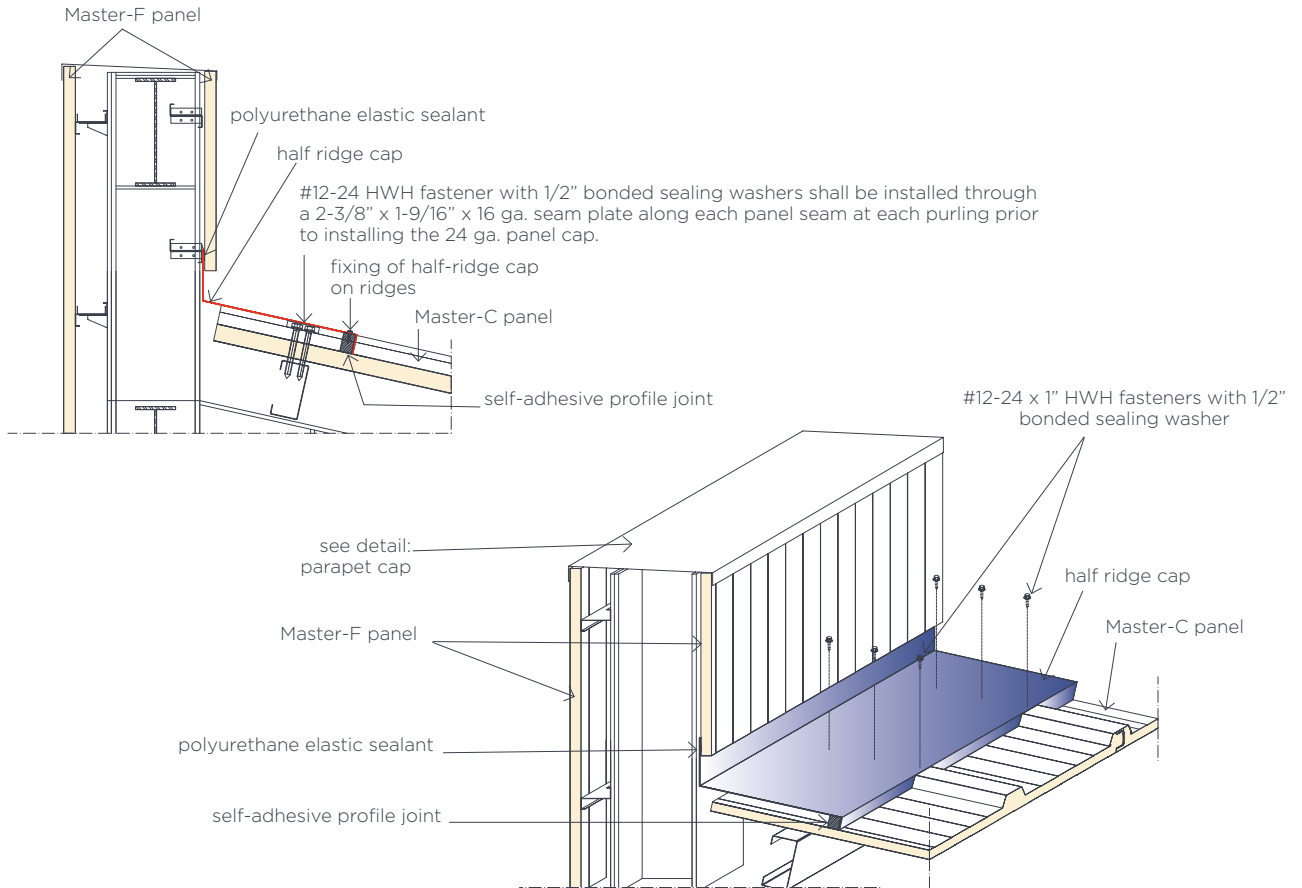
#12-24 HWH fastener with 1/2" bonded sealing washers shall be installed through a 2-3/8" x 1-9/16" x 16 ga. seam plate along each panel seam at each purling prior to installing the 24 ga. panel cap.



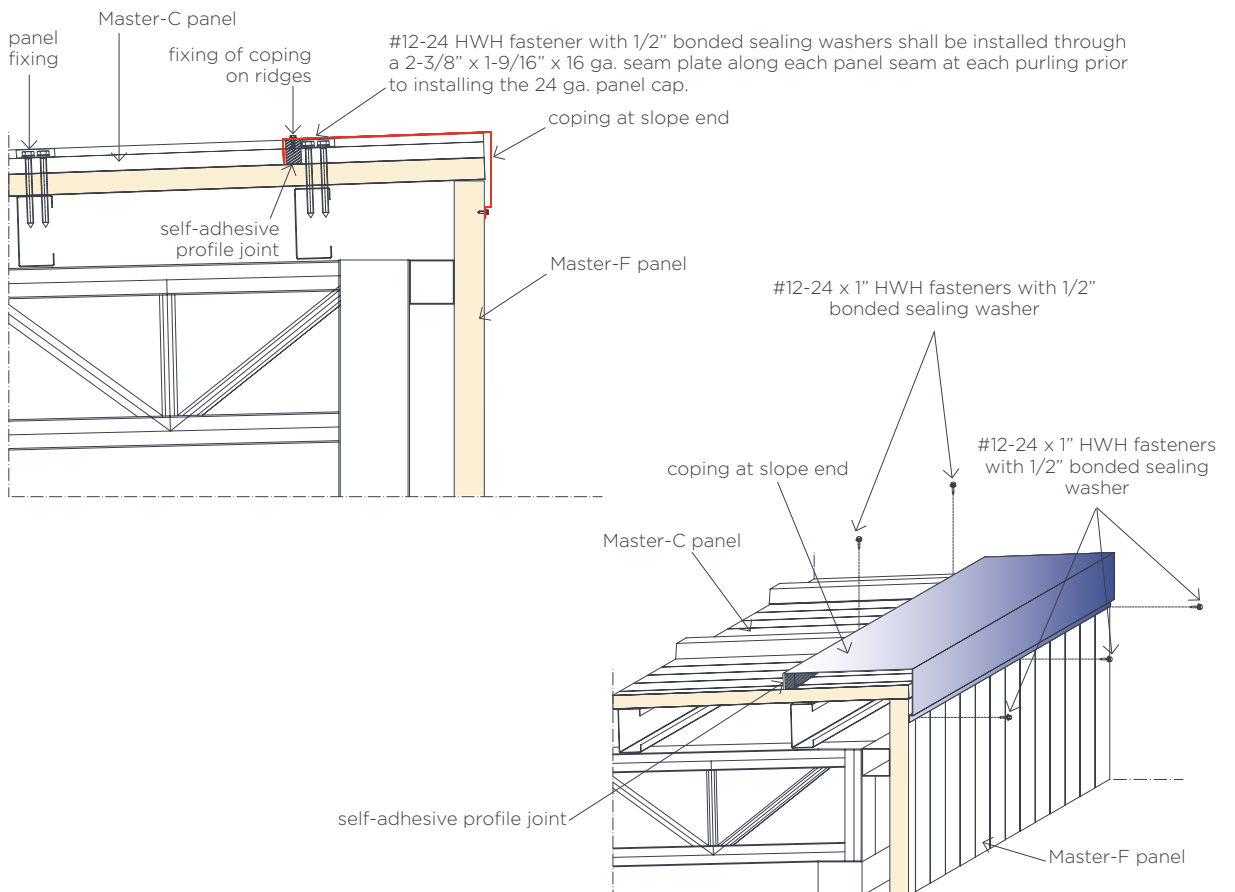
#12-24 x 1" HWH fasteners with 1/2" bonded sealing washer



## Top of slope to wall:

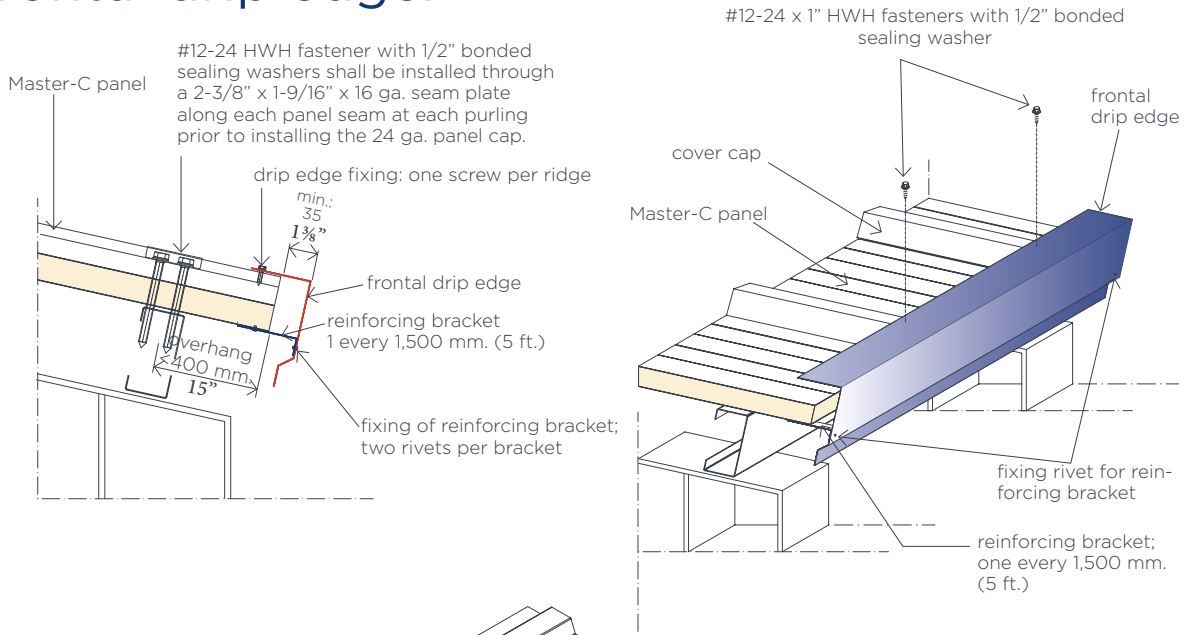


## Copings for slope ends:

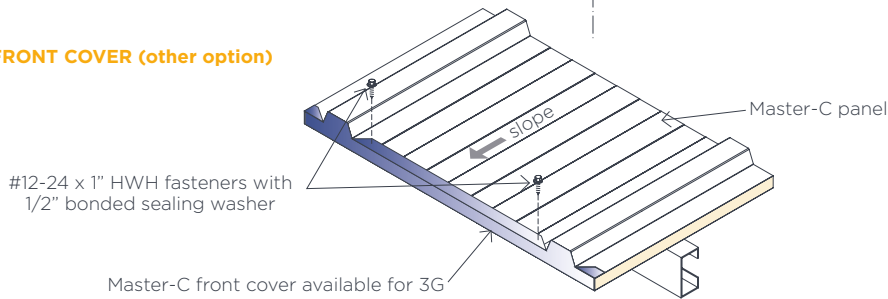




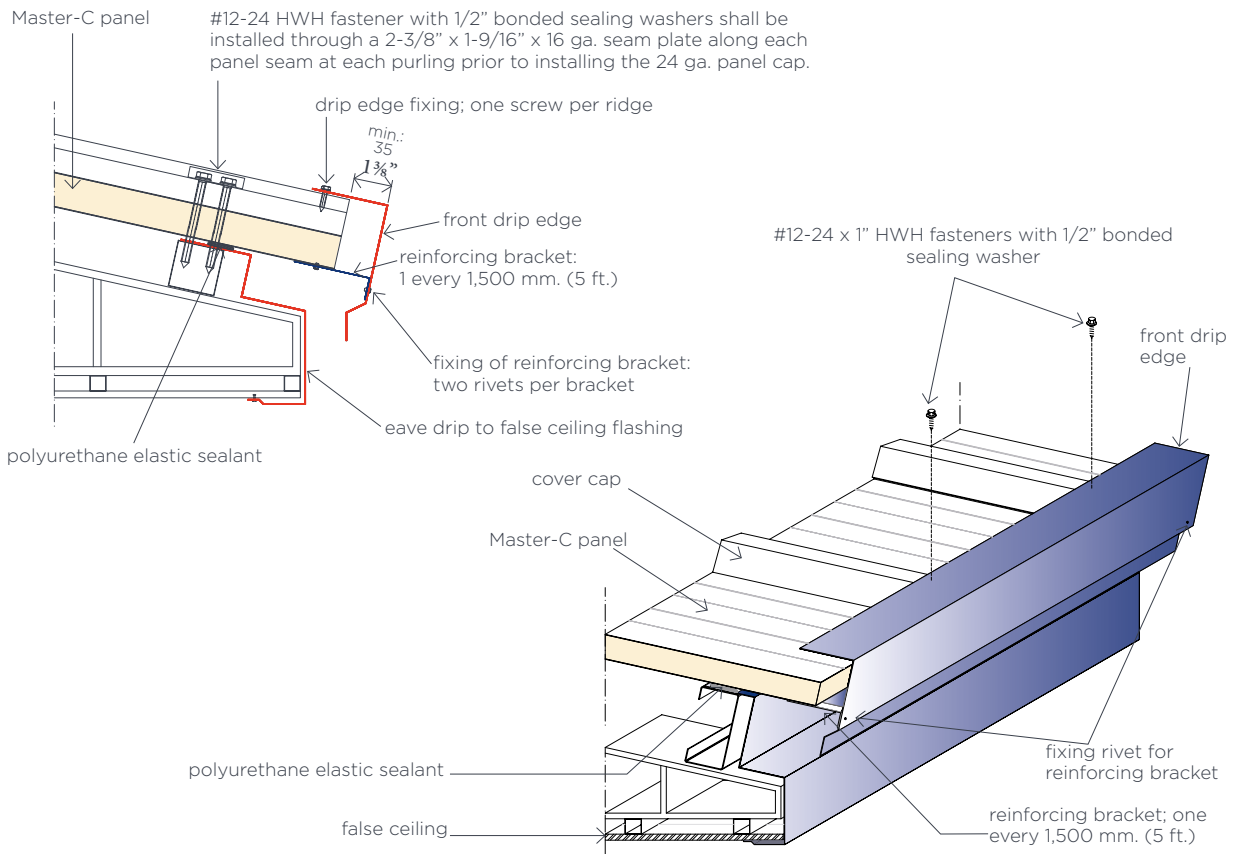
# Frontal drip edge:



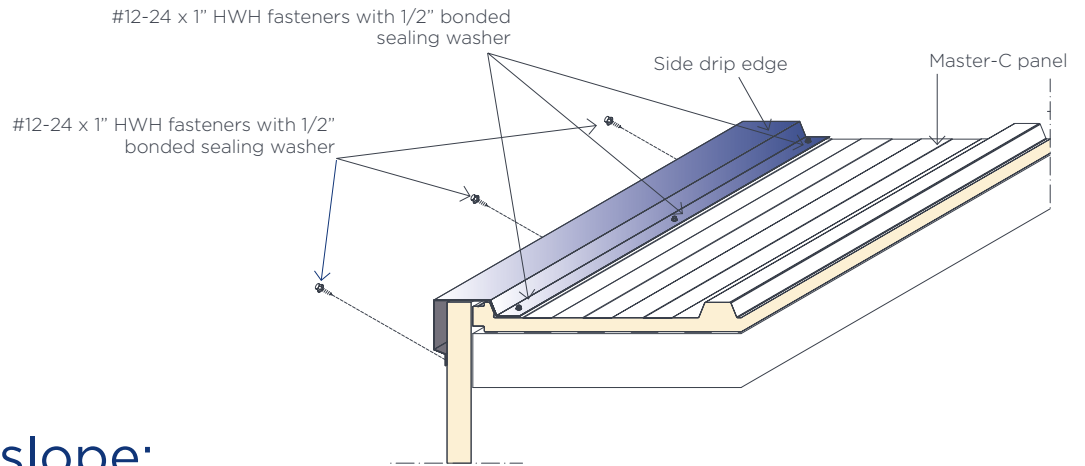
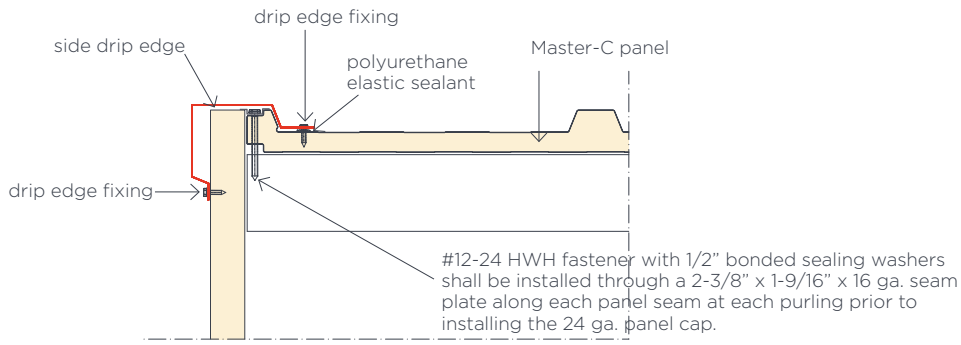
## FRONT COVER (other option)



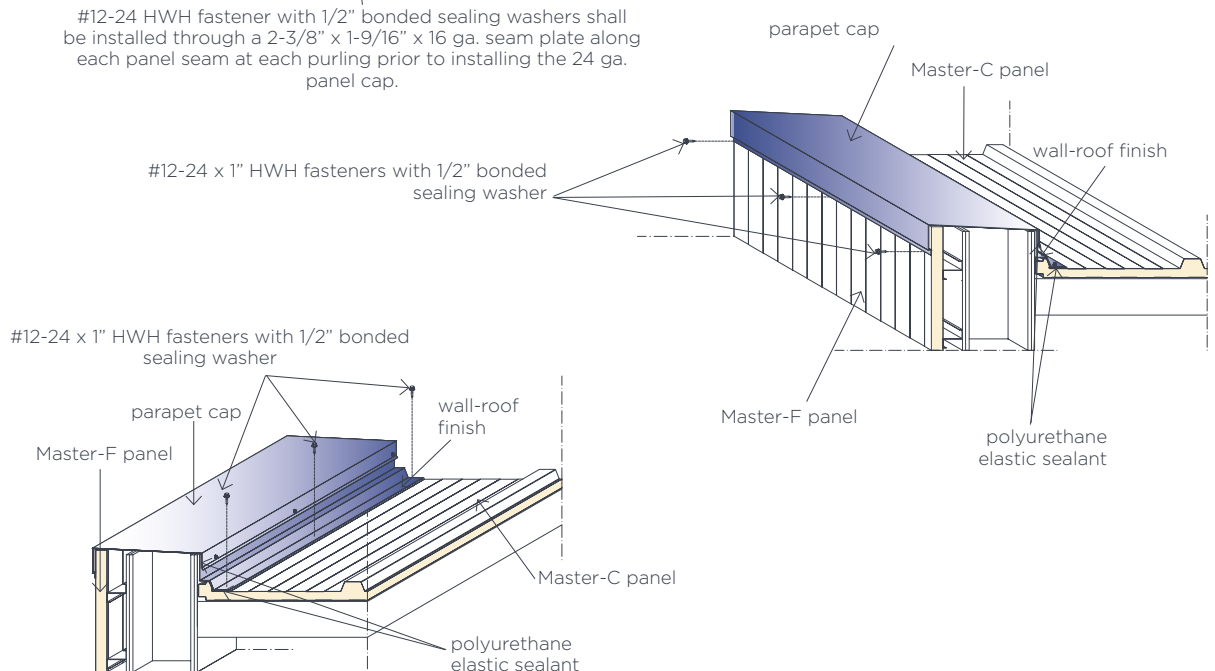
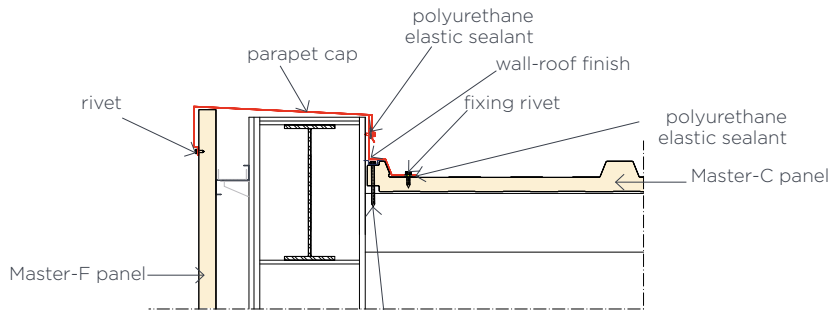
# Eave drip to false ceiling:



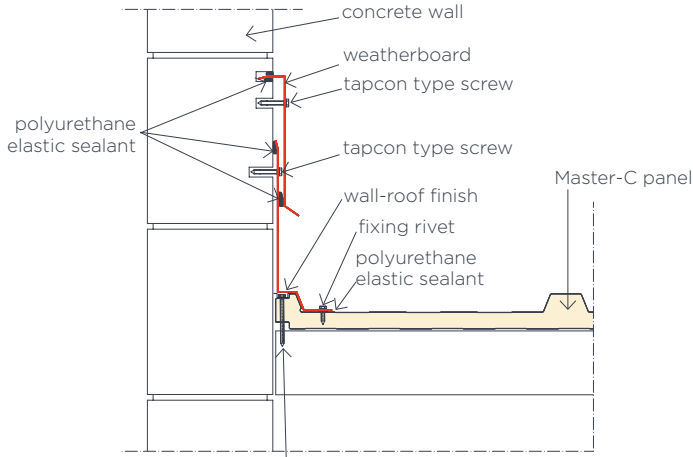
## Side drip edge:



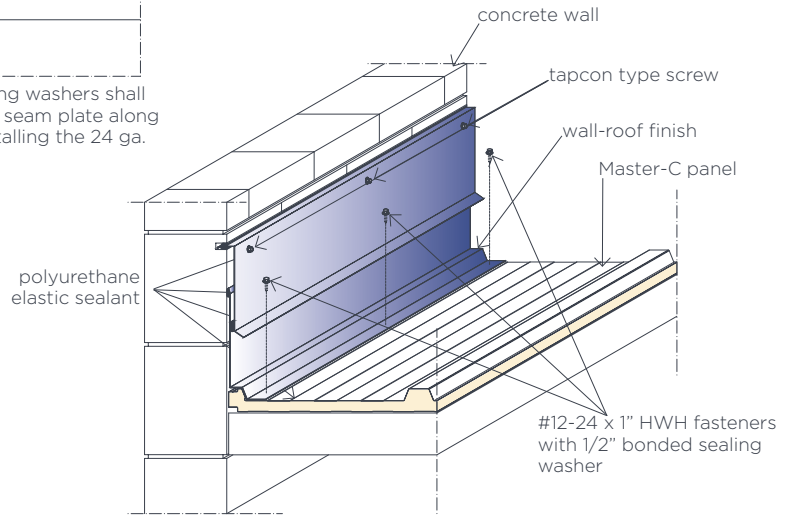
## Side slope:



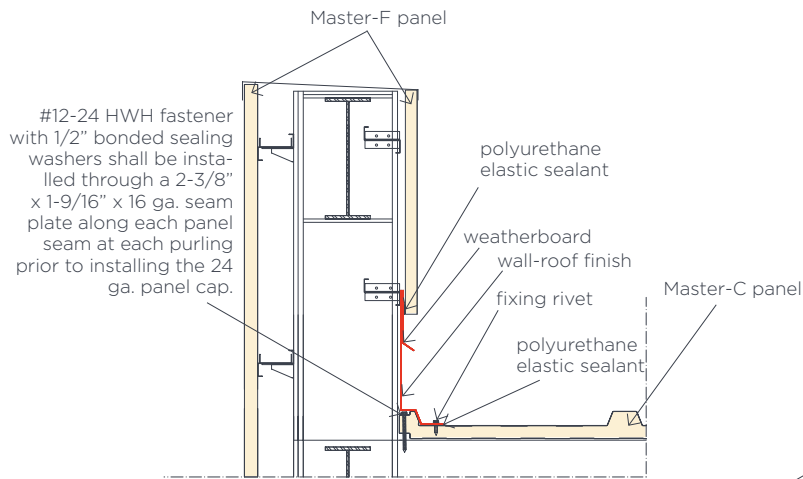
## Side slope to wall:



#12-24 HWH fastener with 1/2" bonded sealing washers shall be installed through a 2-3/8" x 1-9/16" x 16 ga. seam plate along each panel seam at each purling prior to installing the 24 ga. panel cap.



## Side of slope to wall:



#12-24 HWH fastener with 1/2" bonded sealing washers shall be installed through a 2-3/8" x 1-9/16" x 16 ga. seam plate along each panel seam at each purling prior to installing the 24 ga. panel cap.

